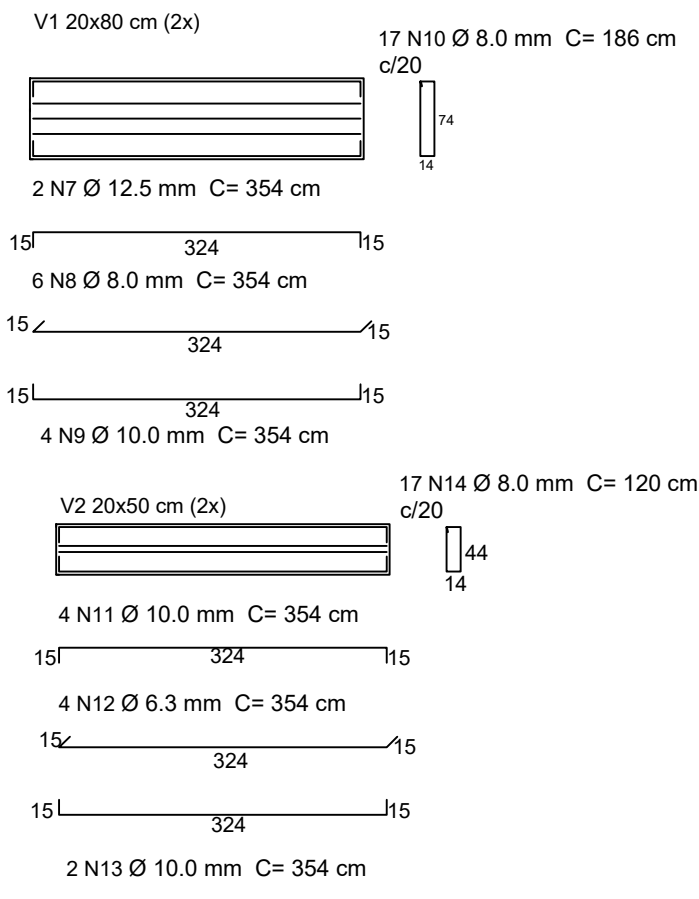
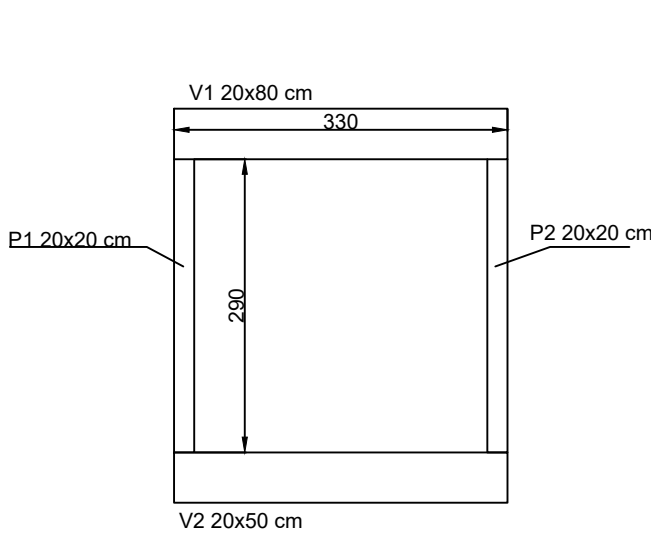
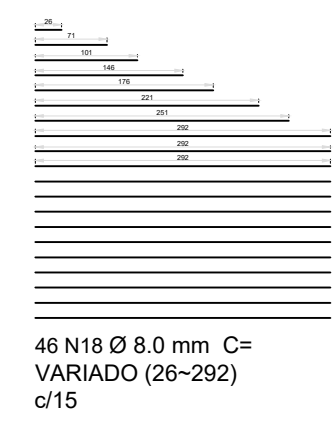
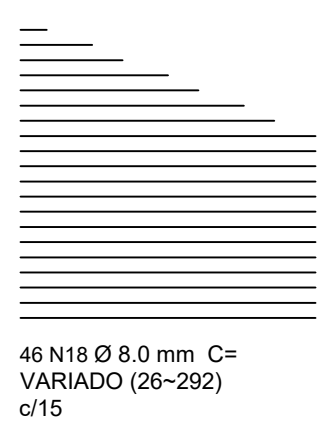
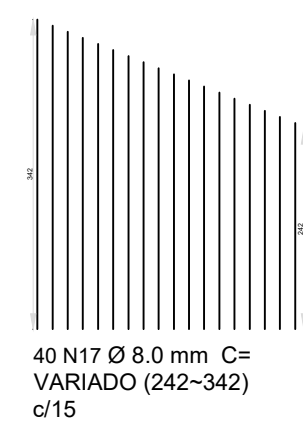
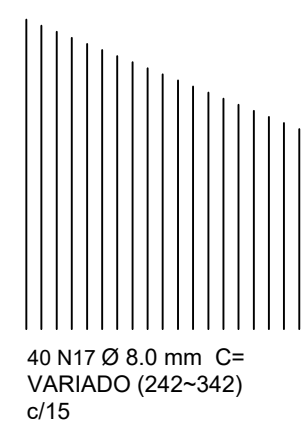
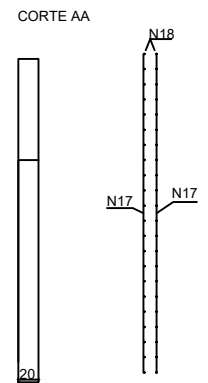
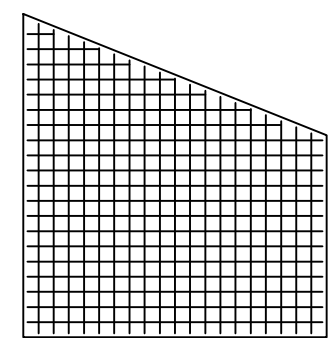
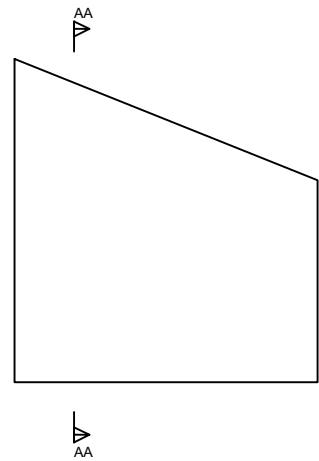


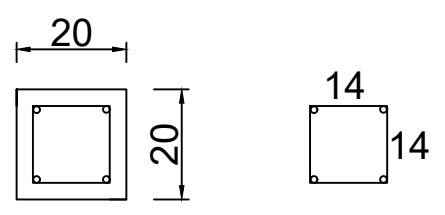
ARMAÇÃO VIGA



ARMAÇÃO ALAS 4X

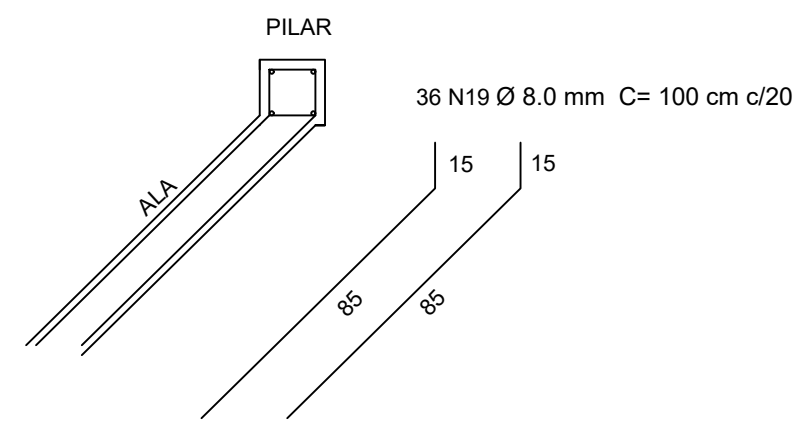


ARMAÇÃO PILAR
20x20 cm (4x)

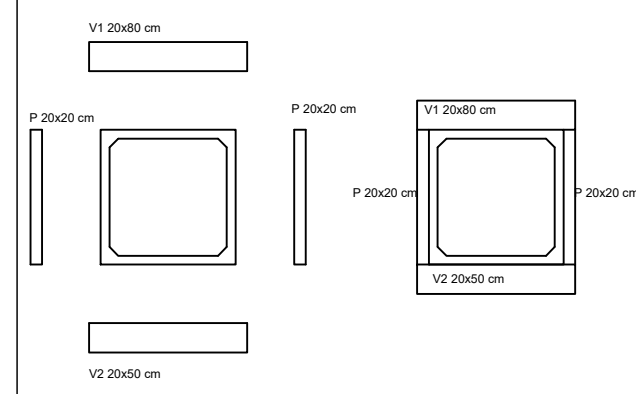


18 N15 Ø 6.3 mm C= 60 cm c/20
04 N16 Ø 12.5 mm C= 400 cm

LIGAÇÃO ALA COM PILAR (4X)



DETALHE VIGA/PILAR



PREFEITURA DE CHAPADA DOS GUIMARÃES		
SECRETARIA MUNICIPAL DE INFRAESTRUTURA		
ASSUNTO: BUEIRO SIMPLES CELULAR DE CONCRETO 250X250 cm		
OBRA: SUBSTITUIÇÃO DE PONTE POR ADUELAS		
LOCAL: CÓRREGO RIBEIRÃOZINHO		
AUTOR DO PROJETO: _____		
ENG. DAYNA APARECIDA DA SILVA - CREA - MT 49.331		
COORDENADAS: 15°12'1.16"S 55°39'28.29"W		DATA: AGOSTO/2021
DIMENSÕES: 250X250X700 cm		ESCALA: S/E
DESCRIÇÃO: ARMAÇÃO ALA/VIGA/PILAR		VISTO: FOLHA: 04/04